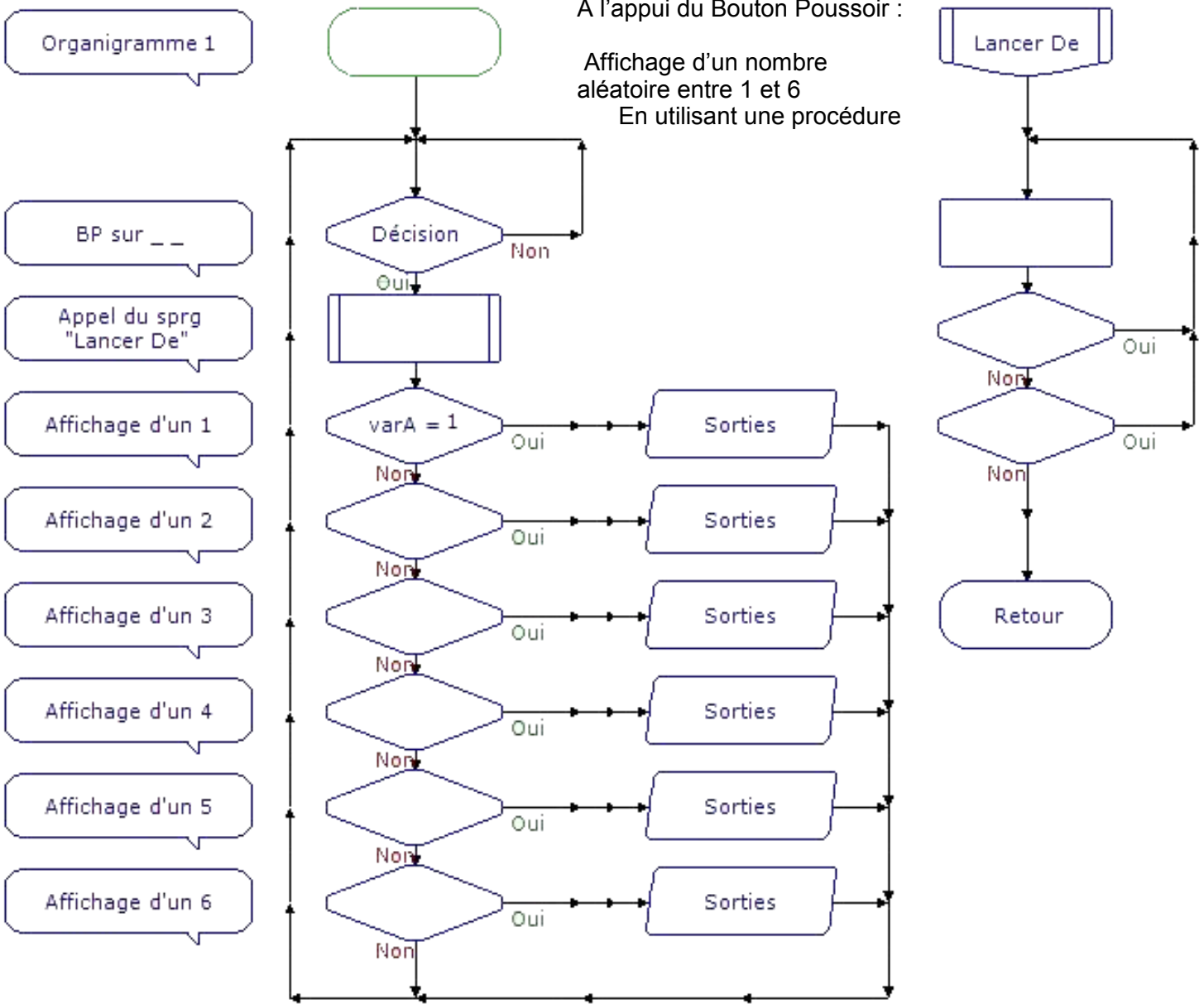
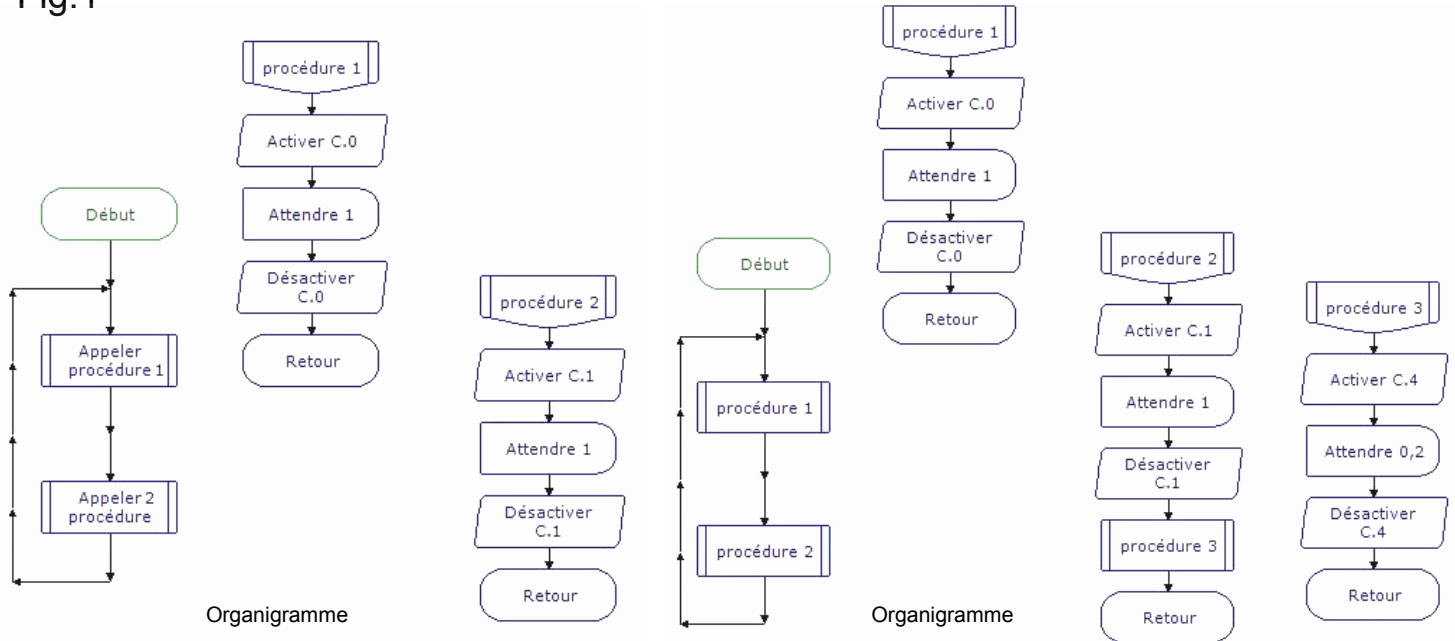
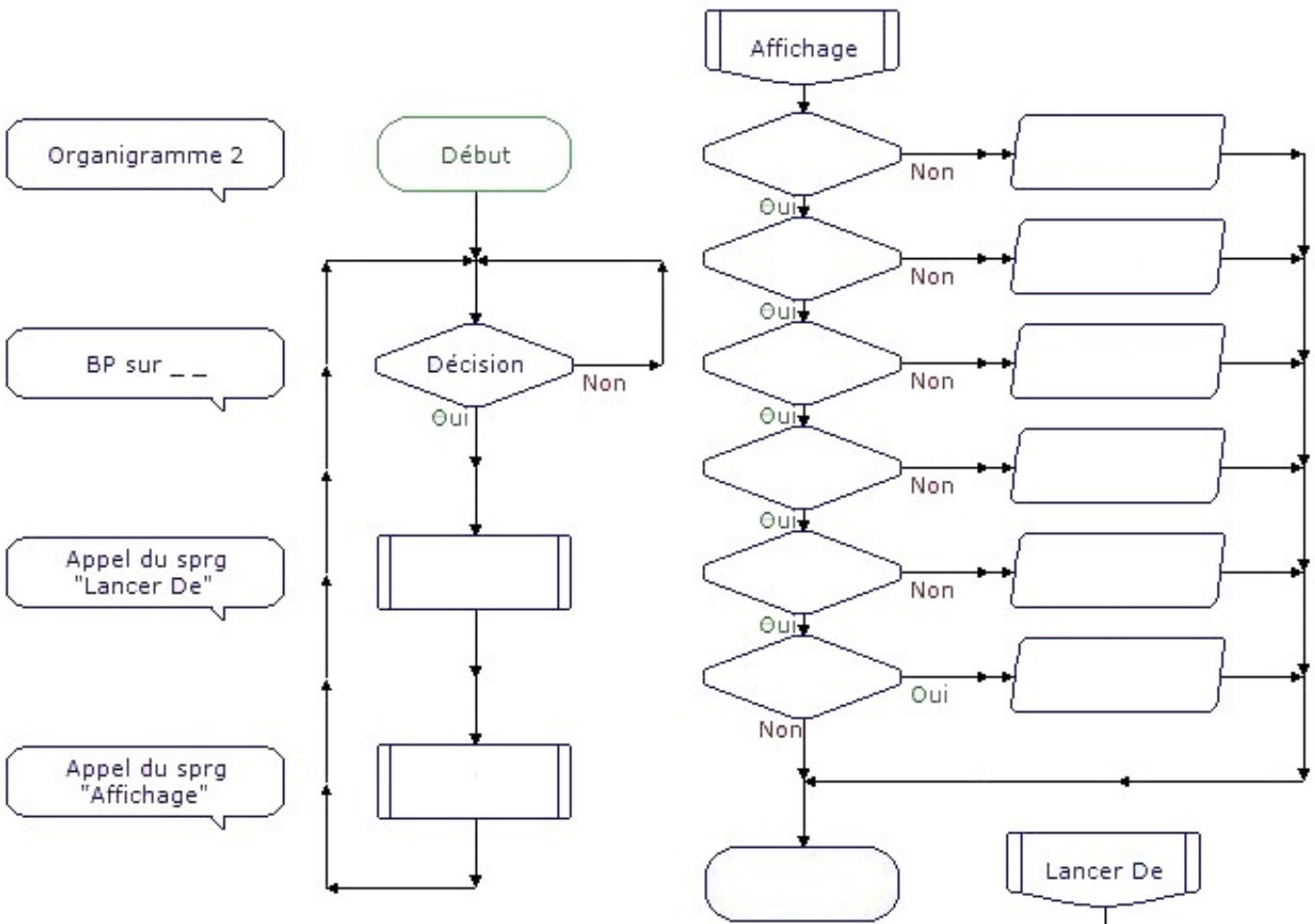


# Programmation 4 - Les procédures

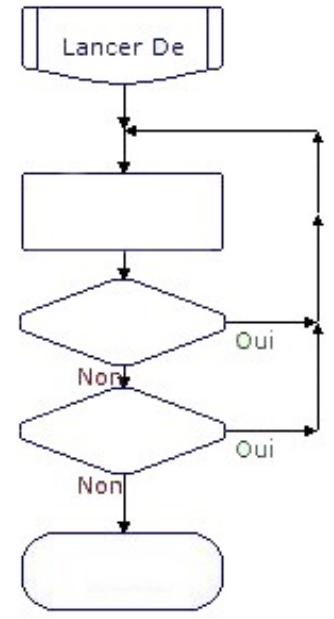
Fig.1



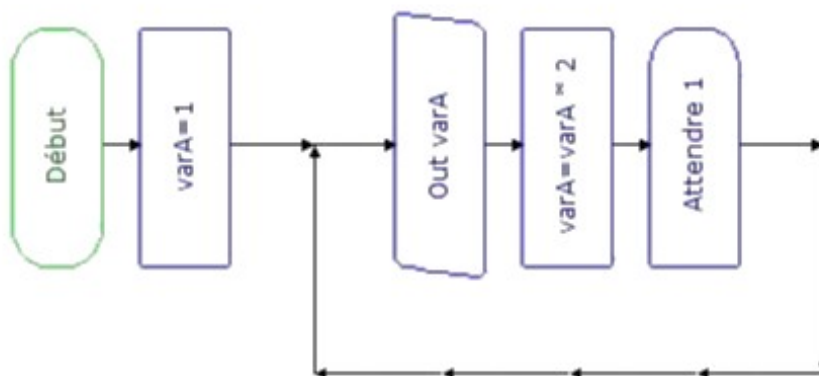


A l'appui du Bouton Poussoir :

Affichage d'un nombre  
aléatoire entre 1 et 6  
En utilisant 2 procédures



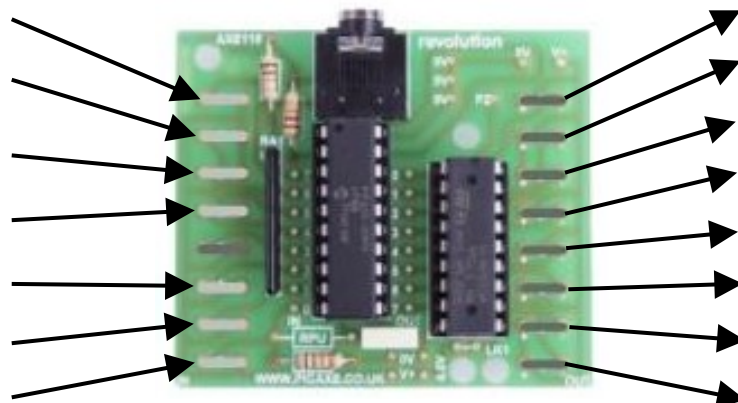
Organigramme 3  
Programme non fonctionnel



Que se passe t'il après 8 passages ?  
.....

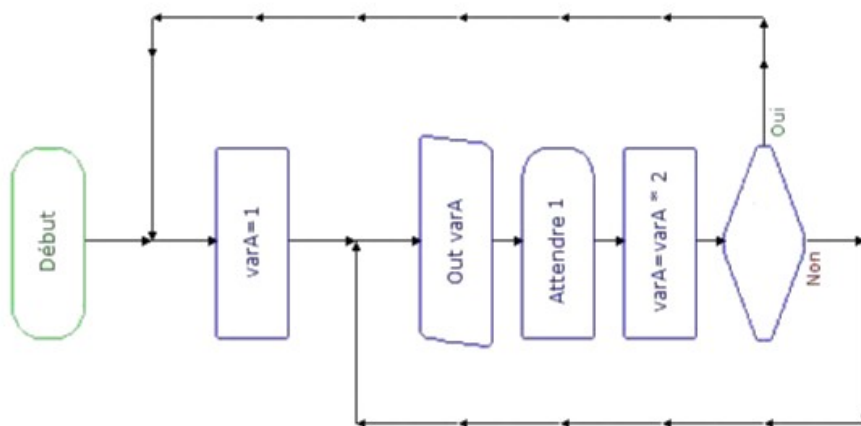
Entrées : capteur TOR

Sorties : Leds



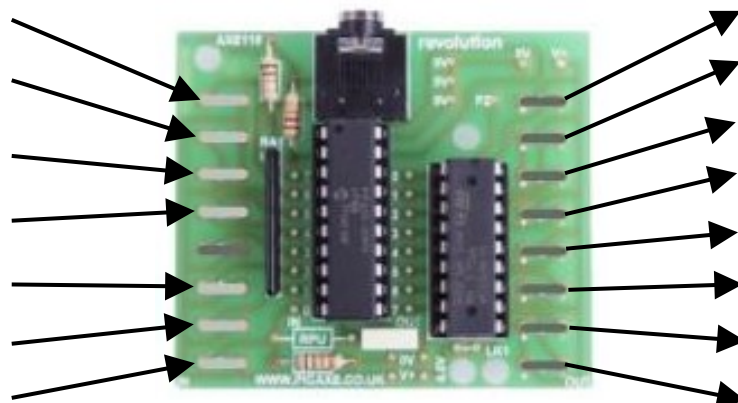
AXE118 20pin Project Board

Organigramme 3  
Programme fonctionnel



Entrées : capteur TOR

Sorties : Leds



AXE118 20pin Project Board

Organigramme 3  
Programme fonctionnel

